



**REGIONAL SPECIALISED METEOROLOGICAL CENTRE-TROPICAL CYCLONES, NEW DELHI
TROPICAL WEATHER OUTLOOK**

DEMS-RSMC TROPICAL CYCLONES NEW DELHI DATED 10.11.2024

TROPICAL WEATHER OUTLOOK FOR THE NORTH INDIAN OCEAN (THE BAY OF BENGAL AND THE ARABIAN SEA) VALID FOR THE NEXT 168 HOURS ISSUED AT 0600 UTC OF 10.11.2024 BASED ON 0300 UTC OF 10.11.2024.

BAY OF BENGAL:

Yesterday's cyclonic circulation over southwest Bay of Bengal extending upto 3.6 km above mean sea level persisted over the same area at 0300 UTC of today, the 10th November 2024. Under its influence a low pressure area is likely to form over the same area during next 36 hours. Thereafter, it is likely to move slowly nearly westwards towards Tamil Nadu/Sri Lanka coasts during subsequent 2-days.

Scattered to broken low and medium clouds with embedded intense to very intense convection lay over northeast adjoining eastcentral Bay of Bengal & south Andaman Sea. Scattered low and medium clouds with embedded moderate to intense convection lay over rest central & south Bay of Bengal and north Andaman Sea.

***PROBABILITY OF CYCLOGENESIS (FORMATION OF DEPRESSION) DURING NEXT 168 HRS:**

24 HOURS	24-48 HOURS	48-72 HOURS	72-96 HOURS	96-120 HOURS	120-144 HOURS	144-168 HOURS
NIL	NIL	NIL	NIL	NIL	NIL	NIL

***NOTE: EVERY 24HR FORECAST IS VALID UPTO 0300 UTC (0830 IST) OF NEXT DAY**

ARABIAN SEA:

Yesterday's cyclonic circulation over central parts of south Arabian Sea at 3.1 km above mean sea level has become less marked at 0300 UTC of today, the 10th of November, 2024.

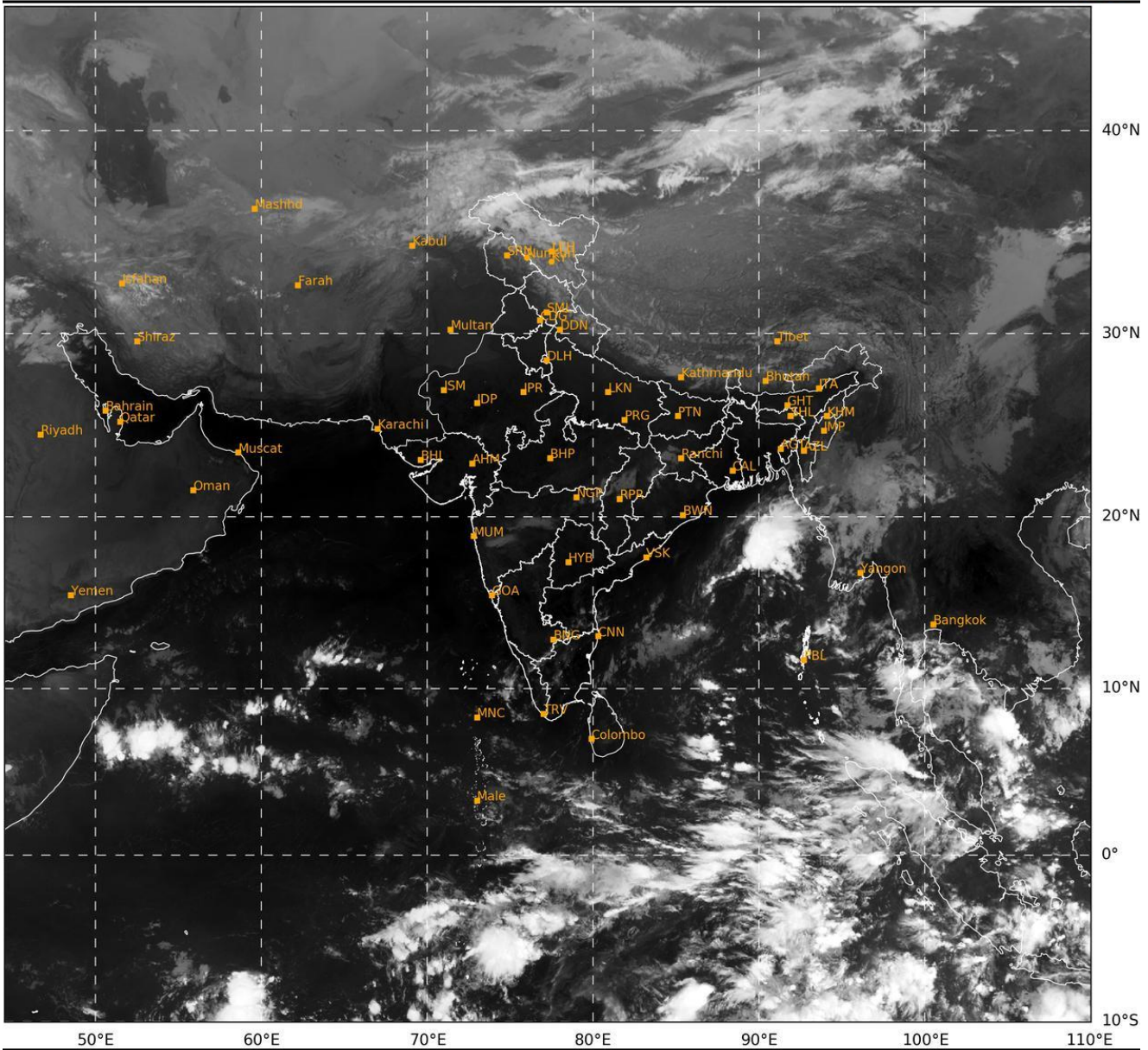
Scattered low and medium clouds with embedded moderate to intense convection lay over southwest Arabian sea and isolated weak to moderate convection lay over southeast Arabian sea.

***PROBABILITY OF CYCLOGENESIS (FORMATION OF DEPRESSION) DURING NEXT 168 HRS:**

24 HOURS	24-48 HOURS	48-72 HOURS	72-96 HOURS	96-120 HOURS	120-144 HOURS	144-168 HOURS
NIL	NIL	NIL	NIL	NIL	NIL	NIL

***NOTE: EVERY 24HR FORECAST IS VALID UPTO 0300 UTC (0830 IST) OF NEXT DAY**

REMARKS: NIL.



Cloud distribution: (a) Isolated: <25%, Scattered:25-50%, Broken: 51-75%, Solid:>75%, Convection Intensity: (a) Weak: Cloud Top Temperature (CTT) >-25°C, (b) Moderate: CTT: - 25°C to -40°C, (c) Intense: CTT: - 41°C to -70°C and (d) Very Intense: : Less than -70°C
PROBABILITY OF CYCLOGENESIS (FORMATION OF DEPRESSION):NIL: 0%, LOW: 1-33%, , MODERATE: 34-66% AND HIGH: 67-100%
This is a guidance Bulletin for WMO/ESCAP Panel Member countries. Visit respective National websites for Country specific Bulletins